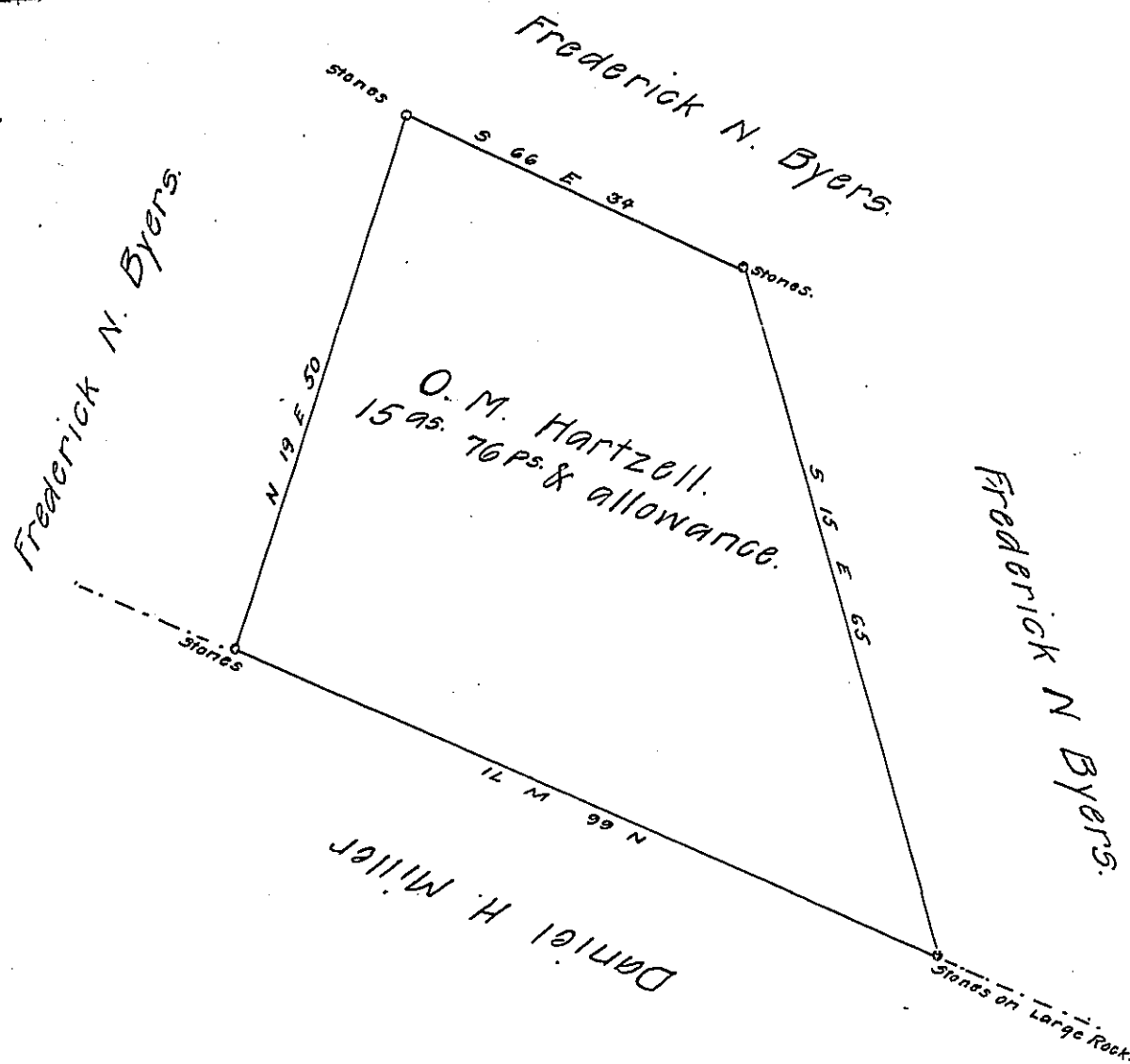


FORM NO 1.



A Draft of a tract of land situated in the township of Middle Woodberry and County of Bedford, containing Fifteen acres, 76 perches and allowance of six per cent for roads etc. Surveyed the 19th day of October 1893, in pursuance of a warrant granted to O. M. Hartzell dated the 29th day of August 1893

Wm. J. Vickroy

To Thomas J. Stewart Esq.,
Secretary of Internal Affairs

County Surveyor.

IN TESTIMONY that the above is a copy of the original remaining on file in the Department of Internal Affairs of Pennsylvania, made conformably to an Act of Assembly approved the 16th day of February, 1833, I have hereunto set my Hand and caused the Seal of said Department to be affixed at Harrisburg, this eighth day of August 1907.

Henry How

Secretary of Internal Affairs.